

Satellite Forms™
MobileApp Designer



Satellite Forms software is the premier rapid application development (RAD) tool for Palm OS and Windows Mobile / Pocket PC handhelds.



Satellite Forms® is a visual integrated software development environment (IDE) that makes it easy to create custom applications for Palm OS and Windows Mobile/Pocket PC devices. Satellite Forms allows you to create usable, real-world applications without writing a single line of code. Even more sophisticated applications require minimal scripting or coding to implement.

Using Satellite Forms, you can create mobile applications that access valuable information from company databases-for example, customer orders or contact information. You can design applications to be read-only or to allow users add or update data that can then be transferred back to a company database.

A desktop application you create directs how Satellite Forms applications and data are processed by Microsoft ActiveSync for Pocket PC devices or Palm HotSync Manager for Palm OS devices. This means you have complete control

over downloading data to the handheld and re-integrating the handheld data back into a database.

You can use Satellite Forms to create applications for many tasks, including the following:

- Sales automation
- Field service
- Health care
- Insurance
- Inventory control
- Inspections
- Distribution
- Retail
- Market research
- Route Tracking
- And much more!

The Satellite Forms applications you create provide several benefits to your end users and to your company or client. They make important and useful database information portable and easy to access. They make data entry and verification fast and accurate. They reduce costs by cutting down on paperwork and eliminating the need for re-keying information.

Satellite Forms has four main components:

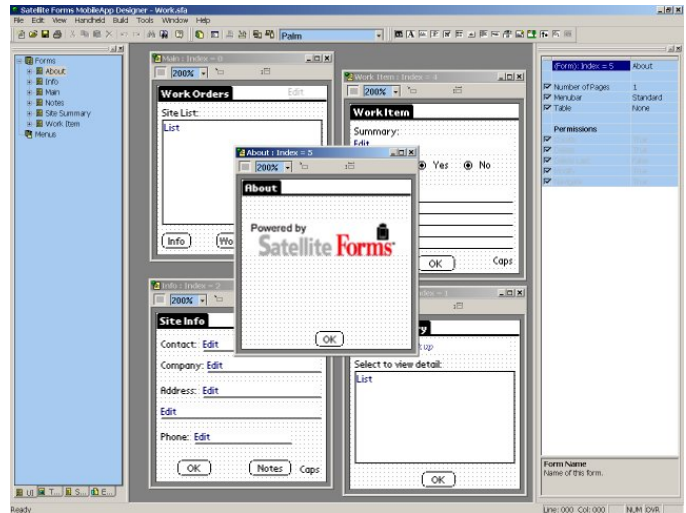
1. **MobileApp Designer:** The visual integrated development environment (IDE) you use to design the forms and tables of your applications. MobileApp Designer allows you to create applications with multiple forms and tables.
2. **The Conduit:** Manages the transfer of data to and from PalmOS handheld devices and the desktop.
3. **The Satellite Forms ActiveX control:** Works with ActiveSync or HotSync technology to simplify integration with database applications.
4. **The Satellite Forms Engine:** Runs Satellite Forms applications on handhelds.

Satellite Forms uses the industry standard dBase and Microsoft Access formats to transfer information between desktop and handheld devices, making the applications you create using Satellite Forms compatible with the leading database products.

License Information

Satellite Forms is licensed on a per-developer (individual) basis. A single developer may install and use Satellite Forms on up to two (2) PCs at one time (for example one desktop PC and one laptop), but each individual developer requires a separate license. The handheld applications and conduits you create with Satellite Forms are royalty-free.

You can utilize Satellite Forms to create an unlimited number of applications, distributed to an unlimited number of handheld users, with no royalty fees.



Satellite Forms MobileApp Designer

System requirements

Development environment (minimum)

- Microsoft Windows 2000/XP/Vista
- 50 MB available hard disk space
- 256 MB RAM

Handheld device

- Palm OS powered device from Palm, Janam, Sony, Symbol, Garmin, Samsung, Aceeca, Tapwave, and others.
- Windows Mobile/Pocket PC 2002/2003/2003SE/WM5/WM6 compatible device, such as Janam XM65, or HP IPAQ
- Windows CE.NET 4.2 or higher devices, such as industrial handhelds from Janam, Symbol, Intermec, Unitech, Honeywell
- For Palm OS devices: Palm OS 3.5 or higher, and Palm Desktop 3.0 or higher
- For Windows Mobile/Pocket PC/Windows CE devices: Microsoft ActiveSync 3.5 or higher

For more information, or to purchase Satellite Forms, visit:

www.SatelliteForms.net

Telephone 1-888-282-4868 toll-free in USA & Canada, or +1-403-782-5432 international.

Thacker Network Technologies Inc.
5338 – 51 Avenue
Lacombe, Alberta T4L 1N5 CANADA

